

Adding Printer (Step 3)

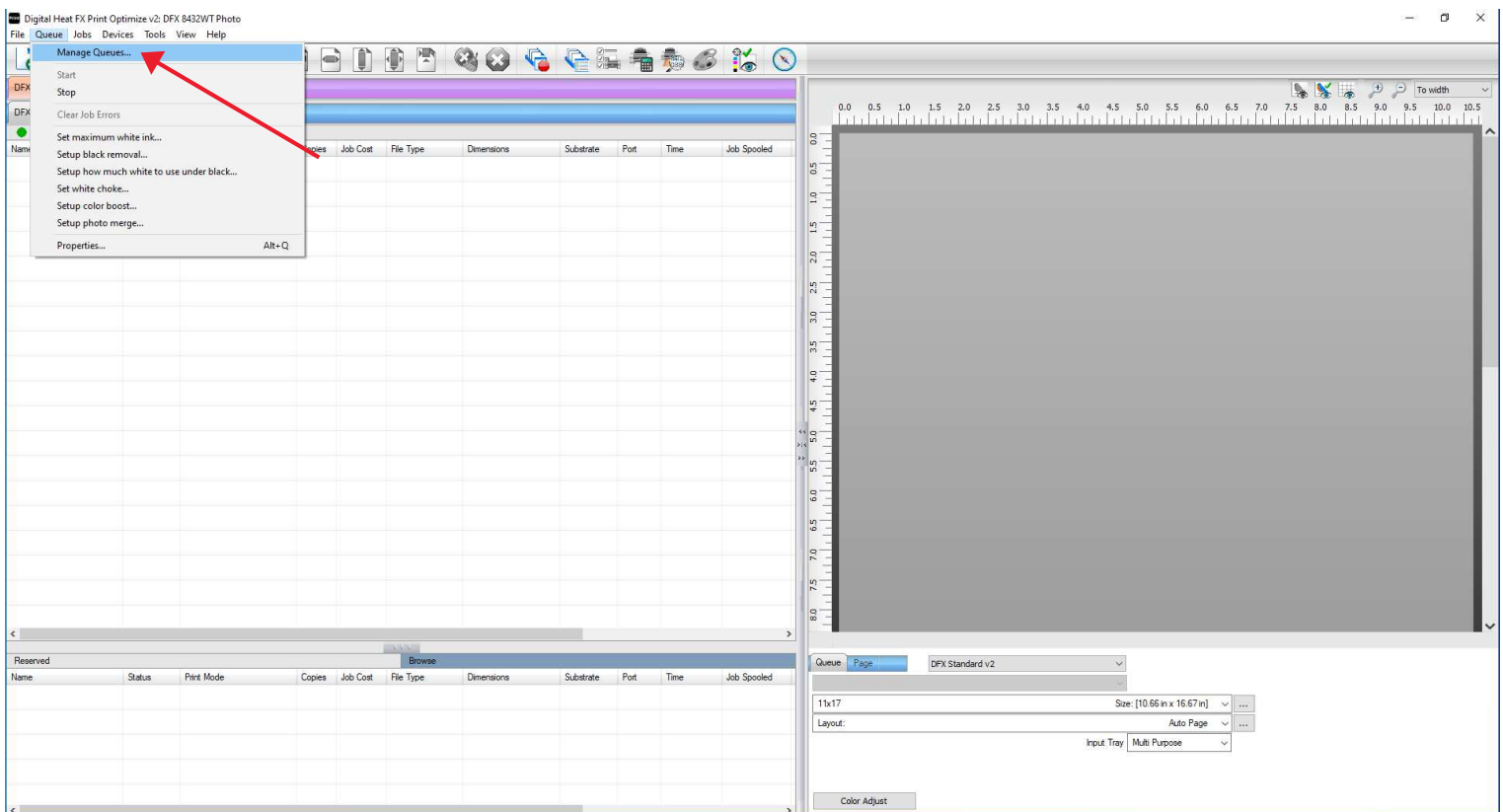
PRODUCTS USED
DFX Print Optimizer

For DFX Print Optimizer

We must now add the printer to the software in order to be able to successfully print.

First, navigate to the top of the screen and locate the **Queue** option and click on it to expand the drop-down menu.

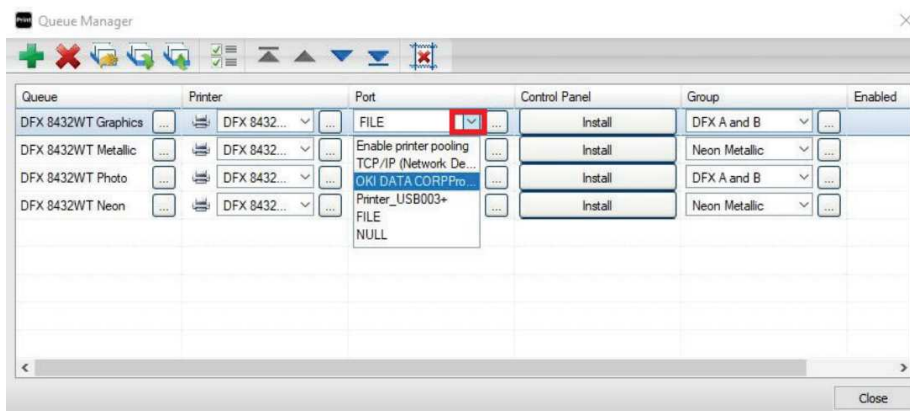
Then, click on **Manage Queues**.



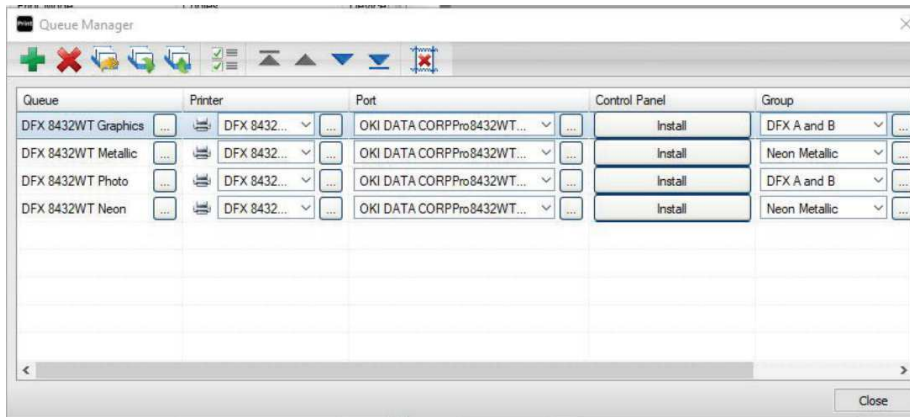
When the *Queue Manager* window pops up, locate the Port section in the middle.

Under *Port*, click the down arrow to expand the drop-down menu and then elect the printer.

NOTE: Your printer must be plugged in, connected and turned on in order for the software to recognize the printer and list it as an option under *Port*.



It will then ask if you would like to change the setting to all the Queues. Click **Yes**.



You have now completed **Step 3** and are ready to use the software!

For additional support, please contact support@coldesi.com or open a ticket at <https://support.coldesi.com/open-a-ticket/>.