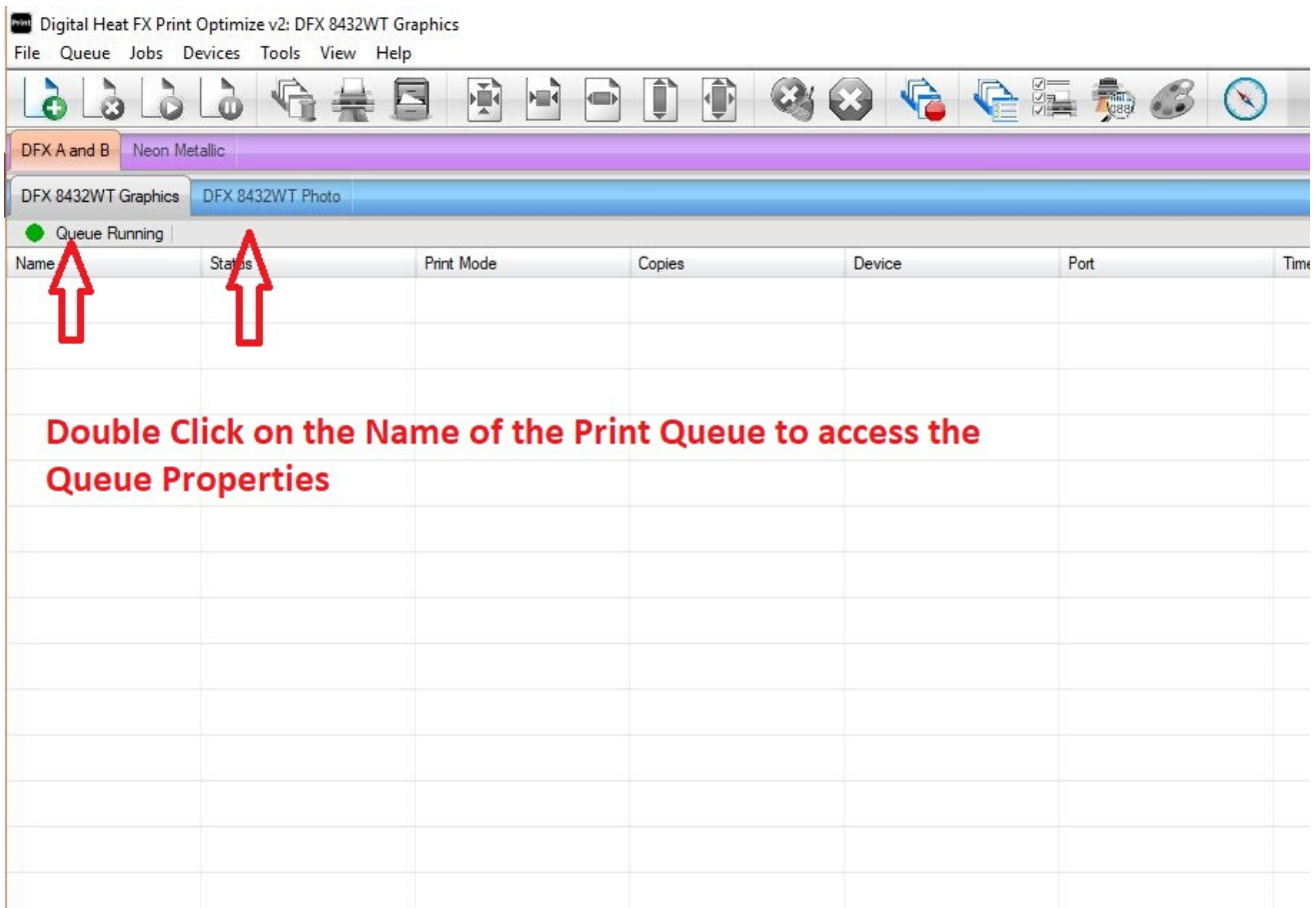


Changing the Substrate Color

For DFX Print Optimizer

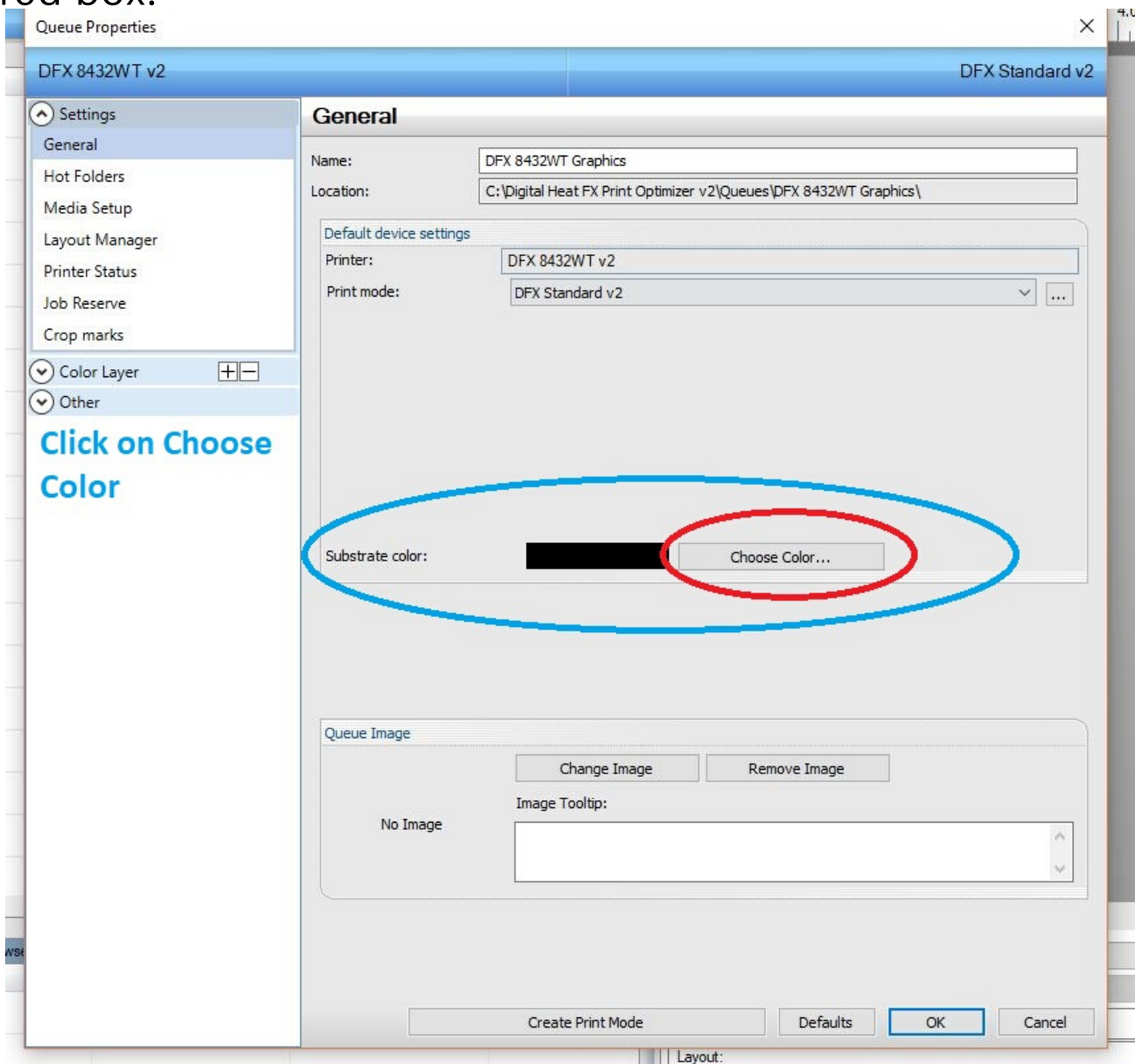
To change the substrate (or background) color within the Print Optimizer software:

1. Open the Print Optimizer software and choose the Queue you would like to work with. Then, double click on the Queue to open the Queue Properties Menu.

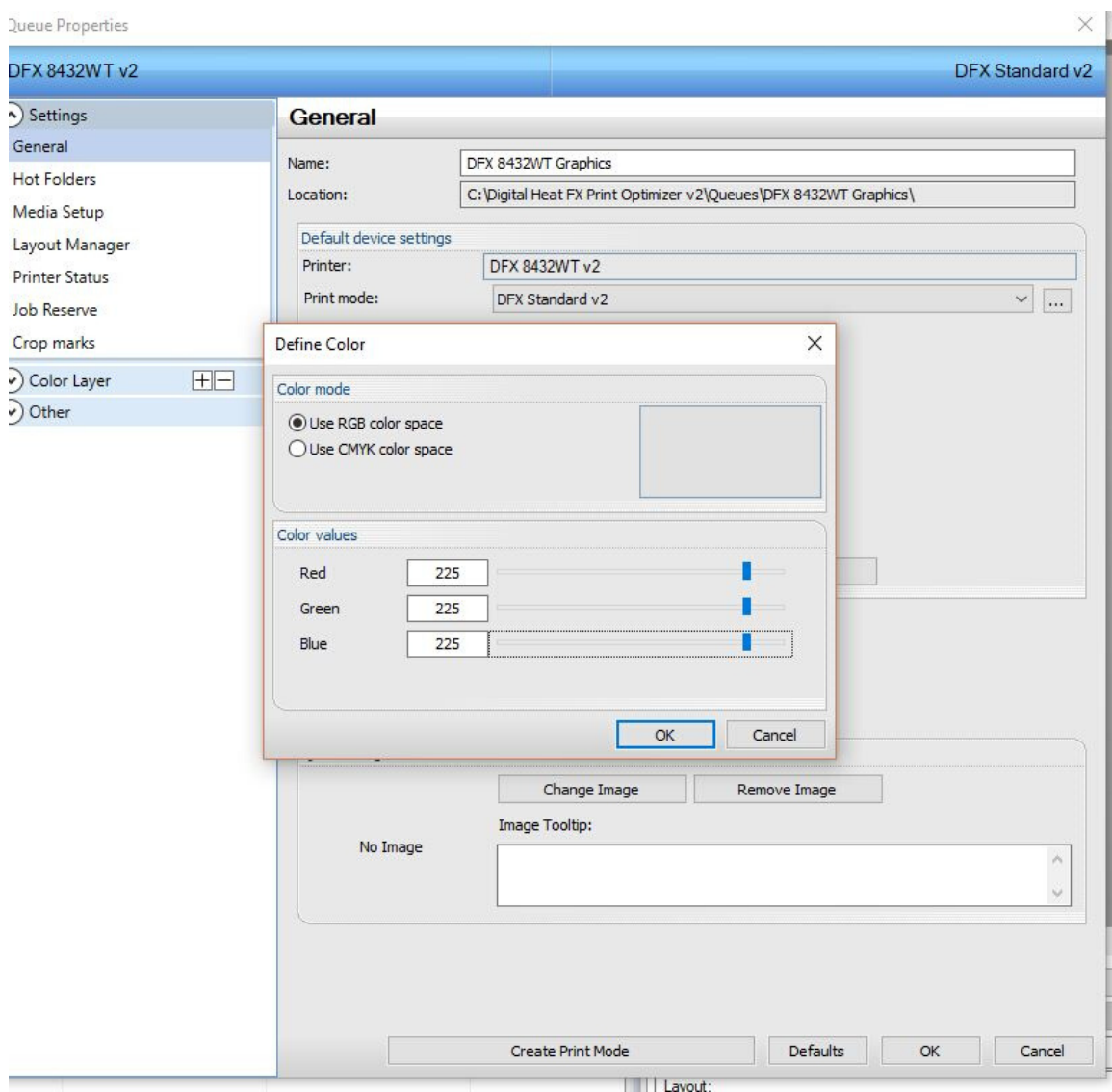


Name	Status	Print Mode	Copies	Device	Port	Time
Double Click on the Name of the Print Queue to access the Queue Properties						

2. On the "General" tab within the Queue Properties menu, you will see the substrate color option on the middle of the window. You are able to change the color of the substrate by clicking on the colored box or by clicking on "Choose color..." to the right of the colored box.



3. If you click on "Choose color...", the Define Color window will appear and you are able to choose specific RGB or CMYK color codes to specify a specific color. Choosing a light gray (RGB color code in photo below) is a good idea when you have a lot of white in your graphic, that way you can see the white areas in the graphic.



For additional support, please contact support@coldesi.com or open a ticket at <https://support.coldesi.com/open-a-ticket/>.