

Removing Safety Box

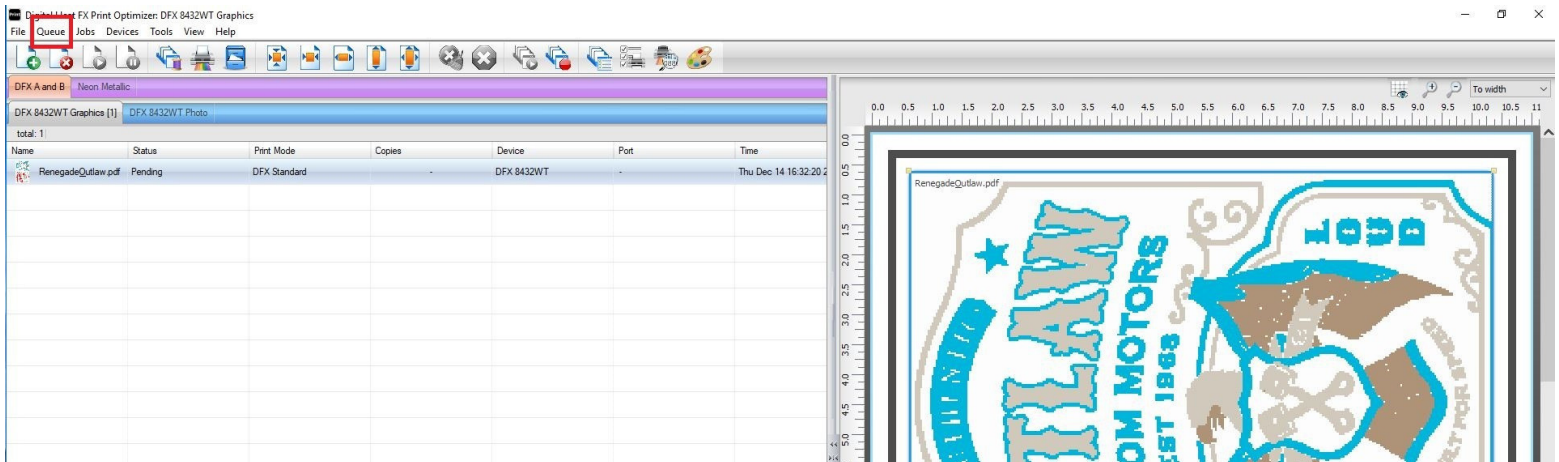
PRODUCTS USED

DFX Print Optimizer

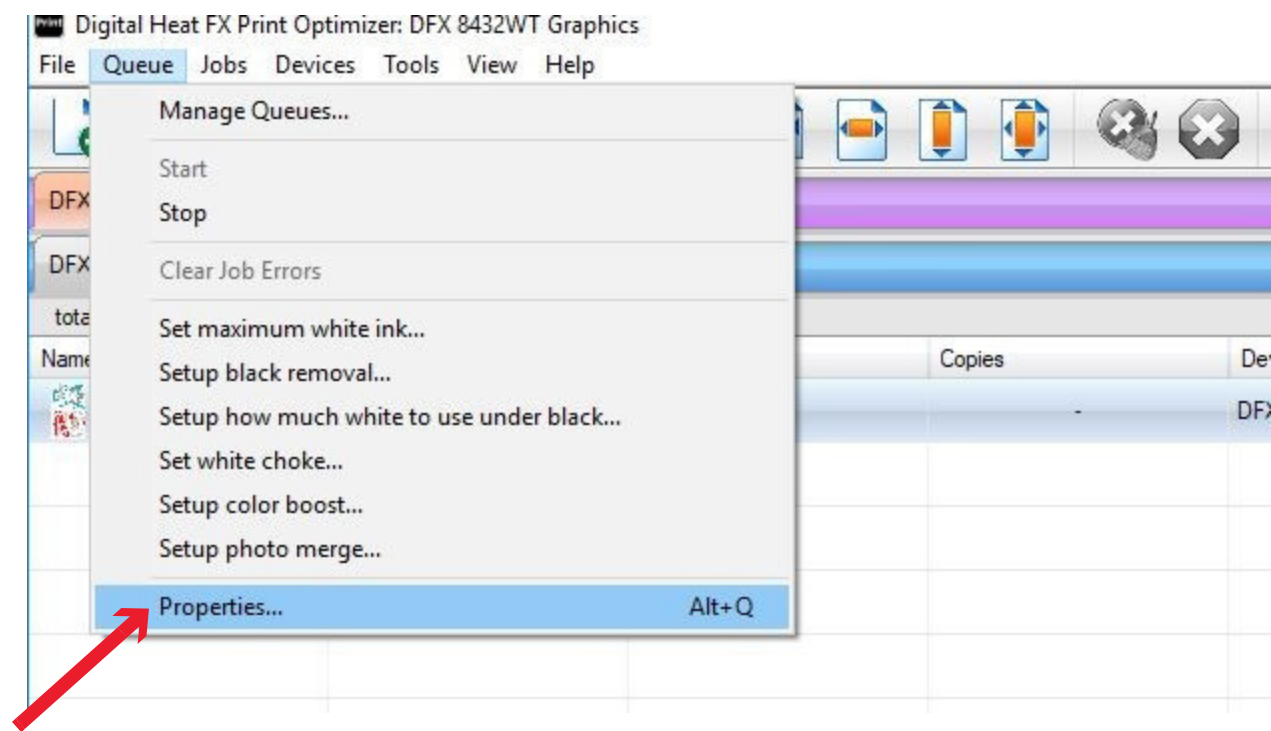
For DFX Print Optimizer

The Print Optimizer software, by default, will add a black safety box around the page to assist with the peel after the marrying press. But, if you choose to, you can remove it in the software.

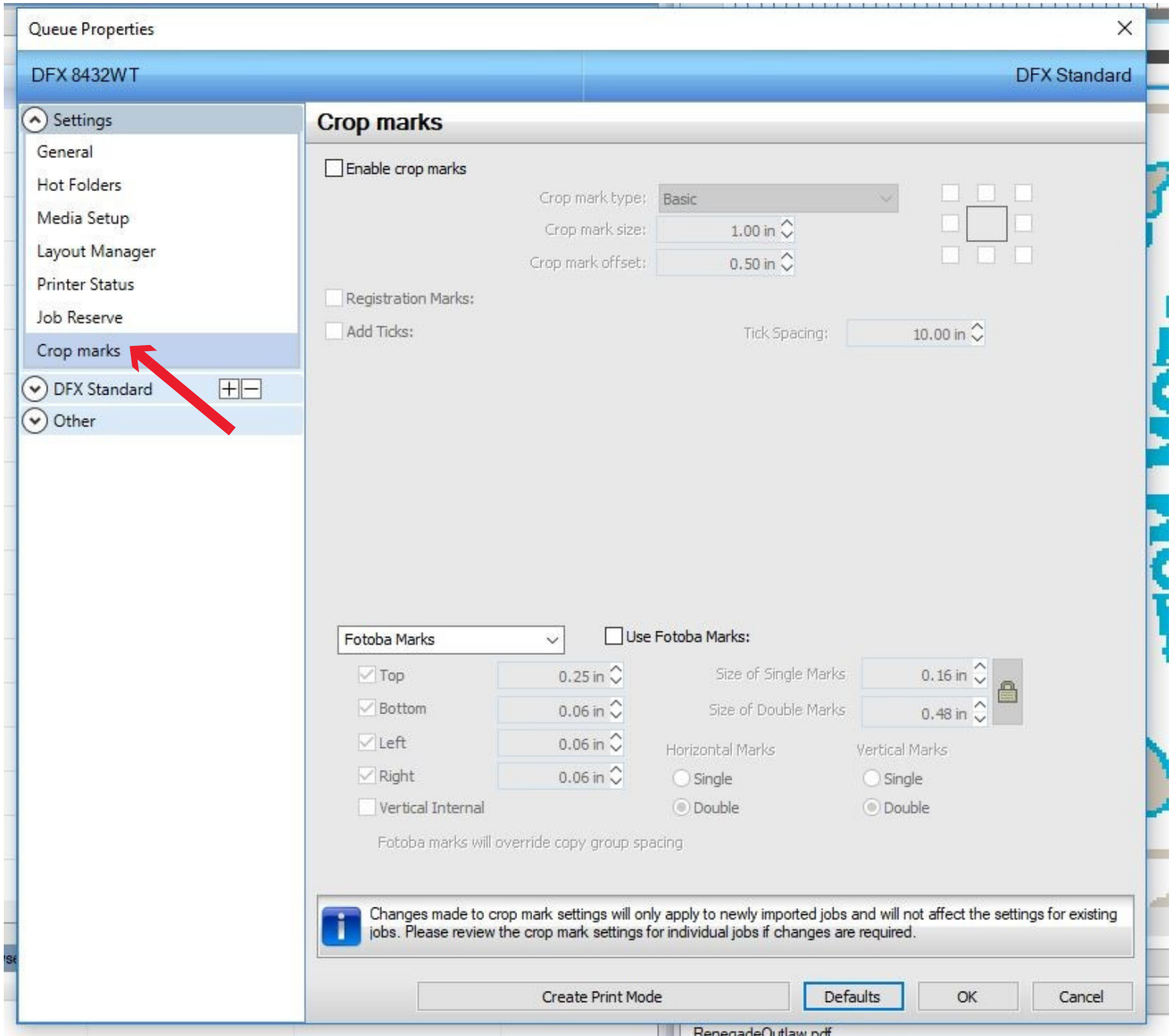
1. Import your file into the Print Optimizer software. Once your image has been imported, click on "Queue" at the top of the page.



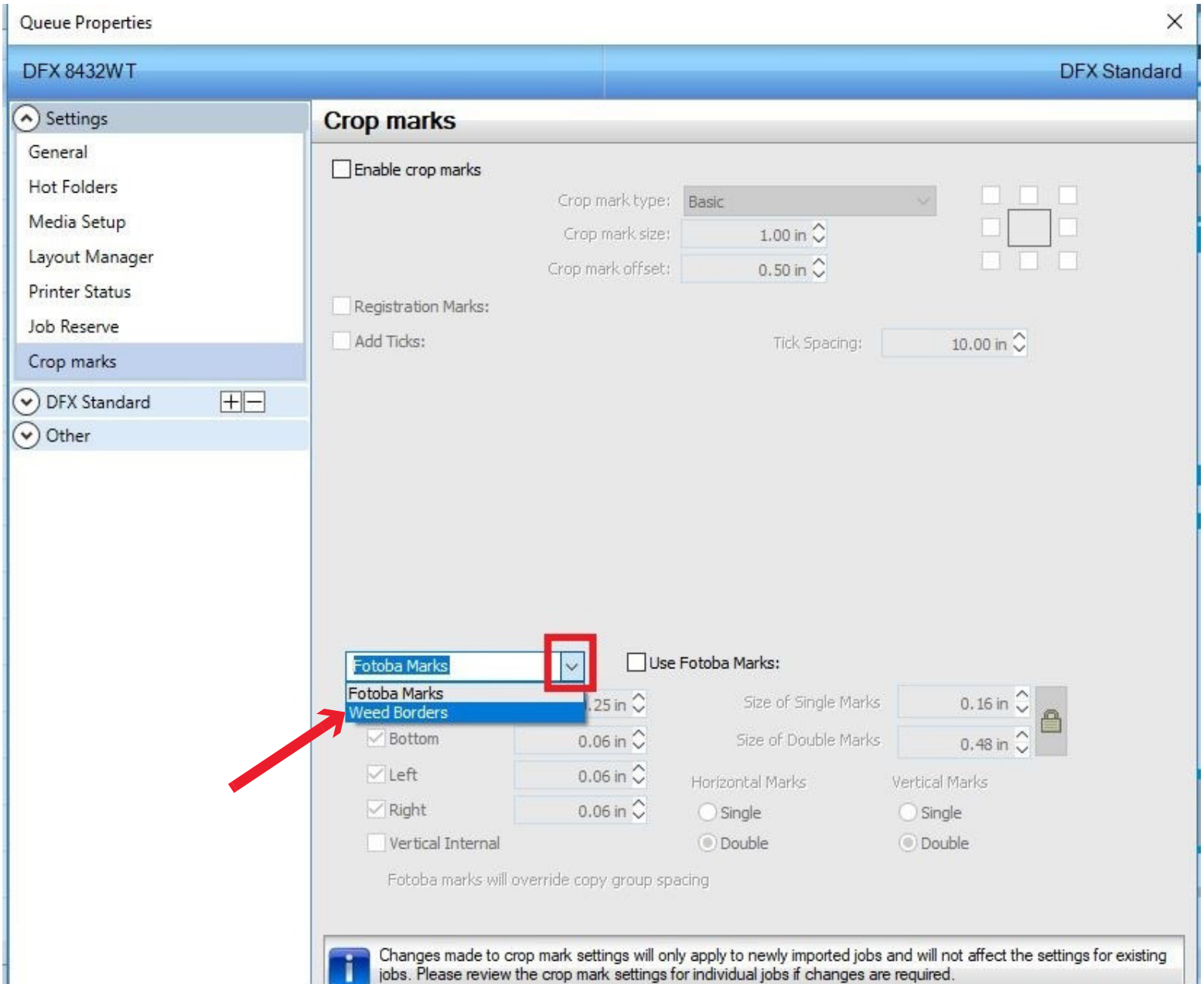
2. Click on "Properties", the last option from the Queue menu.



3. When the Queue Properties window pops up, locate the Settings menu and then click on the last option, "Crop marks".



4. On the Crop marks page, locate the white box that says "Fotoba Marks". Click on the down arrow icon to the right of it and choose the option titled "Weed Borders".



Queue Properties

DFX 8432WT

DFX Standard

Settings

- General
- Hot Folders
- Media Setup
- Layout Manager
- Printer Status
- Job Reserve
- Crop marks

DFX Standard

Other

Crop marks

Enable crop marks

Crop mark type: Basic

Crop mark size: 1.00 in

Crop mark offset: 0.50 in

Registration Marks:

Add Ticks: Tick Spacing: 10.00 in

Use Fotoba Marks:

Fotoba Marks

Fotoba Marks 0.25 in

Size of Single Marks 0.16 in

Size of Double Marks 0.48 in

Bottom 0.06 in

Left 0.06 in

Right 0.06 in

Vertical Internal

Horizontal Marks

Vertical Marks

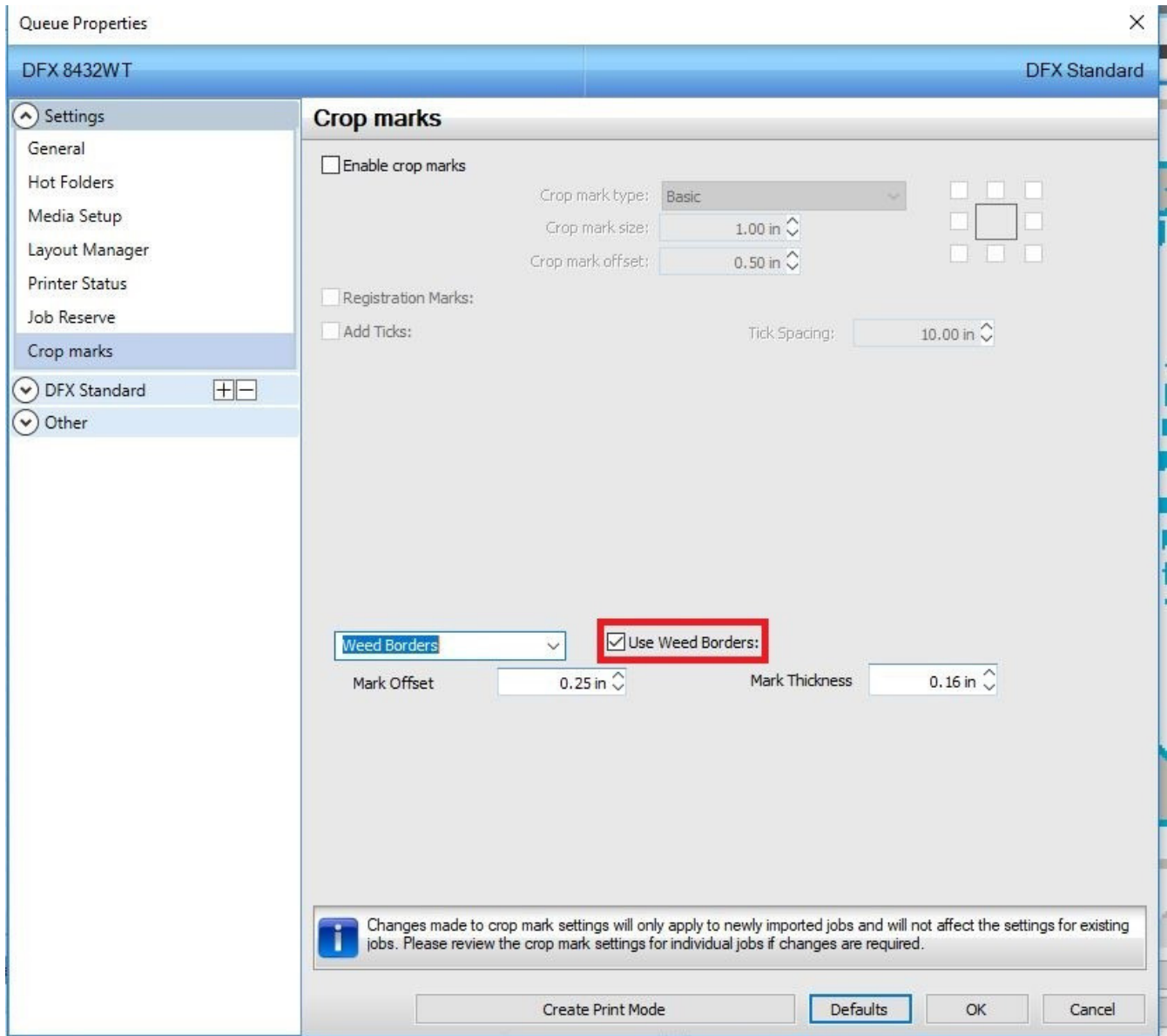
Single Double

Single Double

Fotoba marks will override copy group spacing

Changes made to crop mark settings will only apply to newly imported jobs and will not affect the settings for existing jobs. Please review the crop mark settings for individual jobs if changes are required.

5. The white box to the left of where it says "Use Weed Borders:" should have a check mark inside it. This will signify that there is a safety box around your image. To remove the safety box, simply click the white box to remove the check mark.



For additional support, please contact support@coldesi.com or open a ticket at <https://support.coldesi.com/open-a-ticket/>.