


First Time Setup (Step 2)

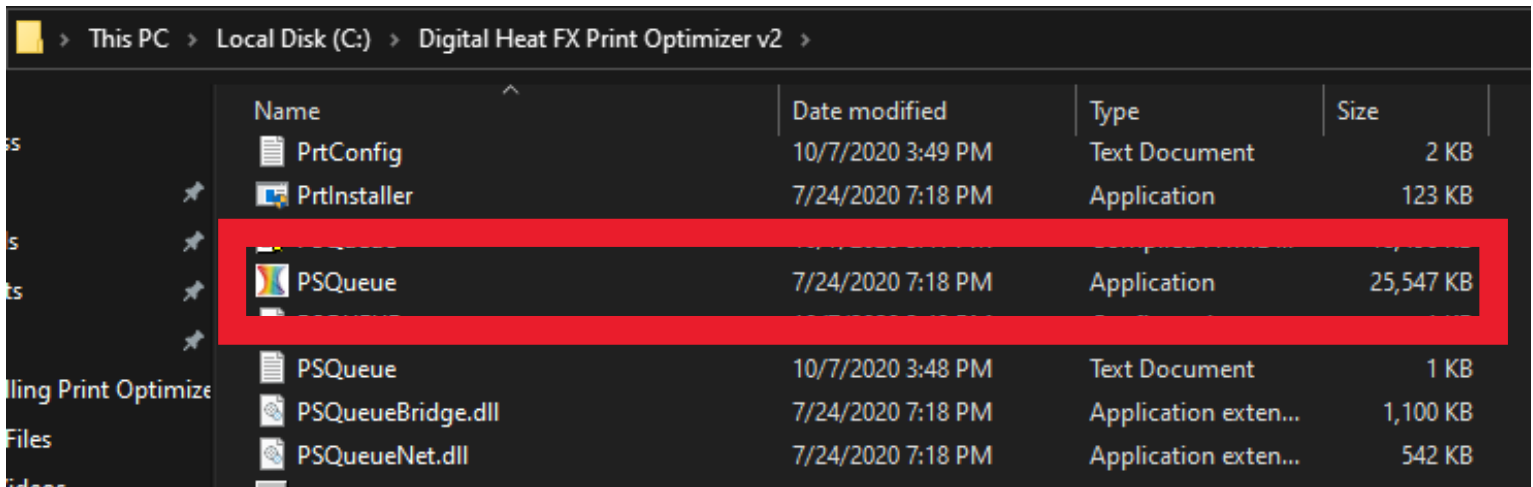
PRODUCTS USED

DigitalHeat FX
Print Optimizer

For DigitalHeat FX Print Optimizer

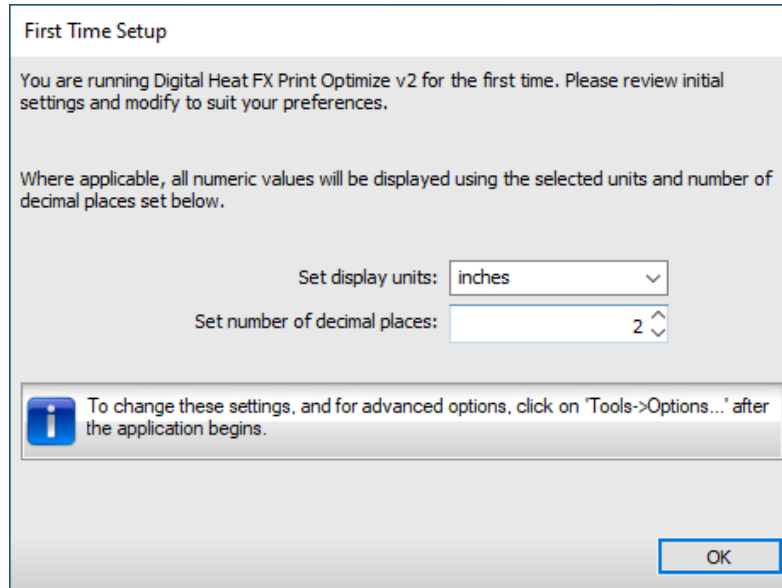
To open the software and begin setup:

- Open the File Explorer window on your computer. 
- Navigate to Local Disk (C:) > Digital Heat FX Print Optimizer v2
- Scroll down to locate the **PSQueue** *application file* from this folder and double click on it to open the software for the first time.

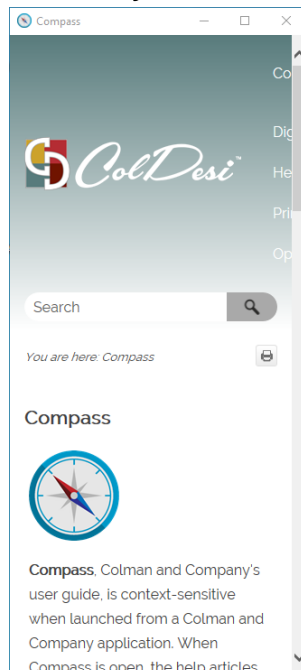


Choose how you would like the measurements to be displayed. Then, press **OK**.

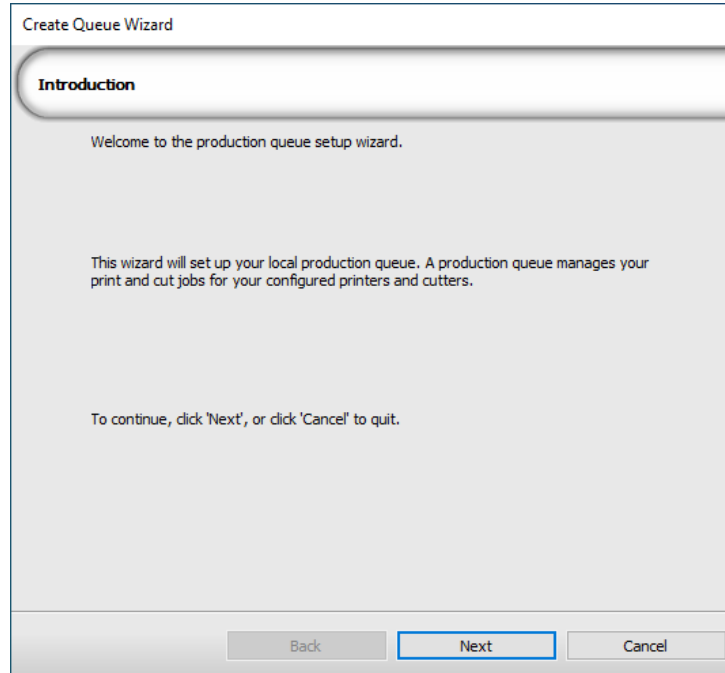
NOTE: You can change this any time in the software by navigating to *Tools>Options*.



The *Compass* window will also open at this time, which is essentially the "Help" section of the software. You may close that window at this time to continue setup.

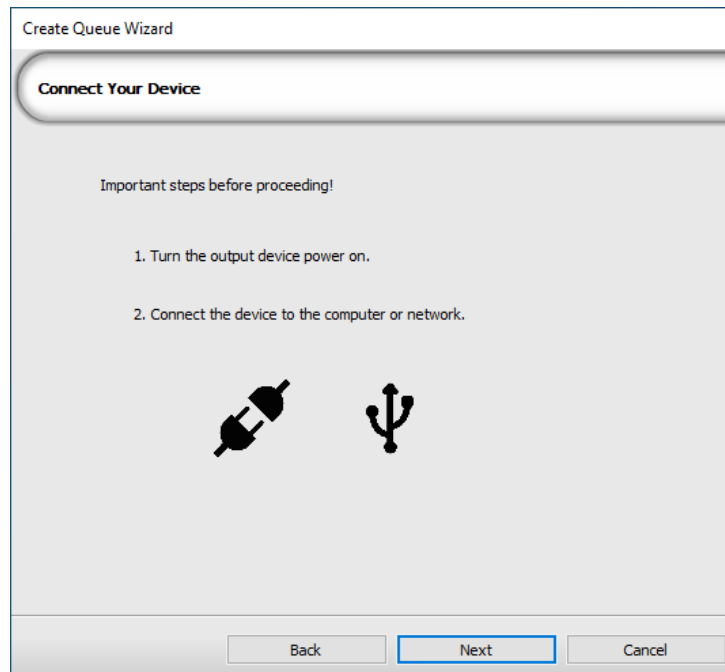


Click **Next**.

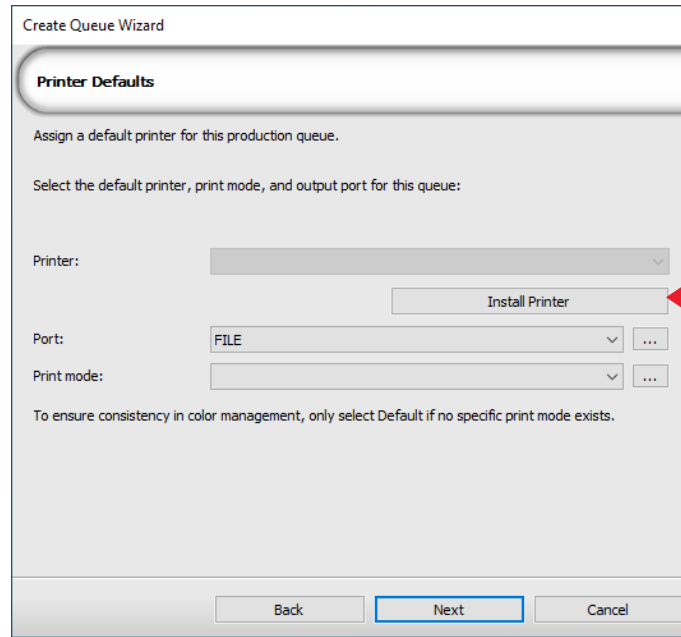


The software now would like you to connect your device. At this time, ensure the printer is plugged in (both the power and USB cords) and turned on.

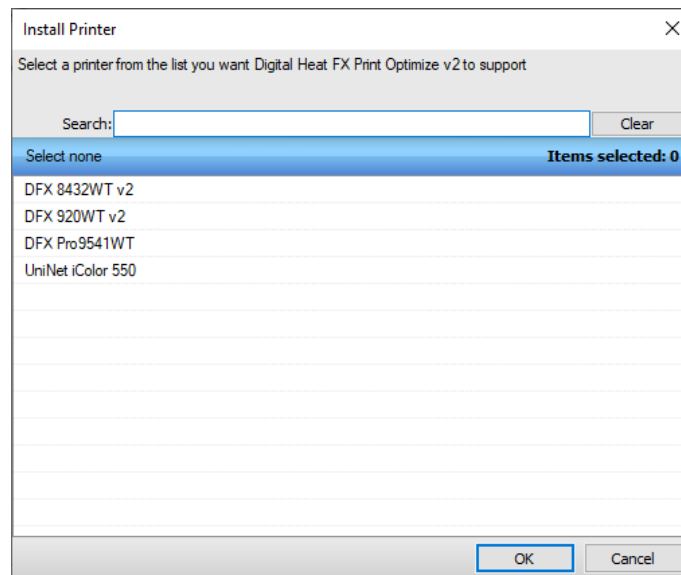
Then, click **Next**.



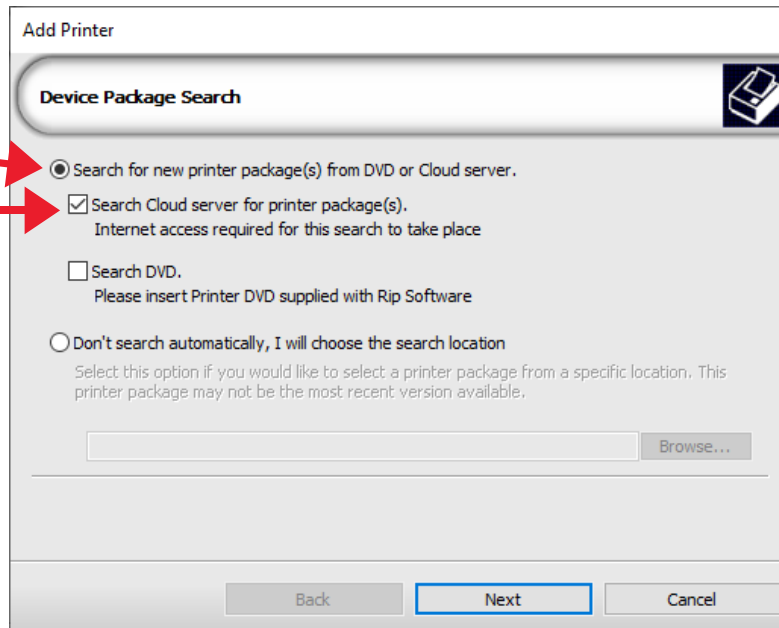
Now, you will assign the printer to the software. Click the **Install Printer** button.



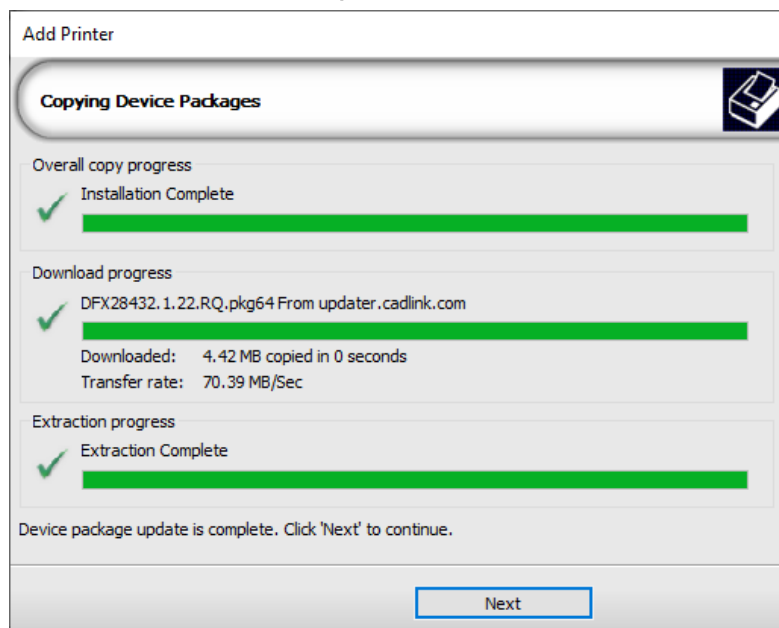
Select the printer you have purchased and would like to install and then click **OK**.



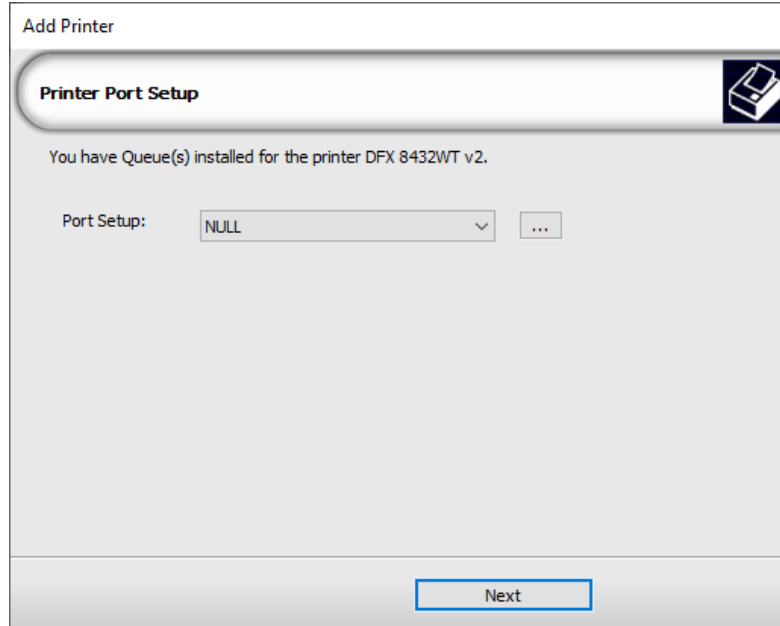
Select **Search for new printer package(s) from DVD or cloud server** AND **Search Cloud server for printer package(s)** and then click **Next**.



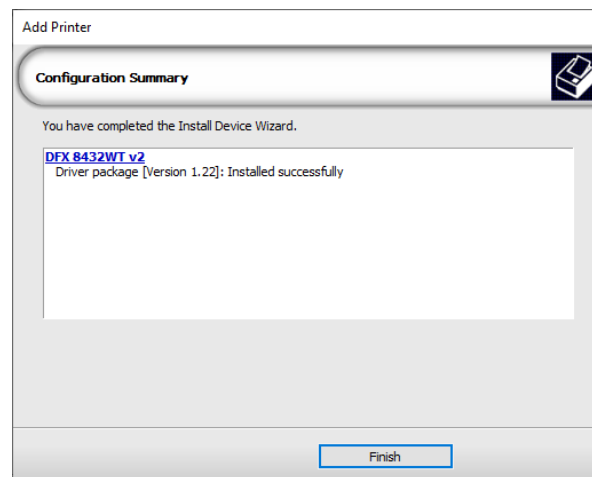
When the device package update is complete and you get the three green checkmarks on the left of the screen, click **Next**.



This screen will ask you to set the Port for the installed printer. You can skip this step, as we will set the port in **Step 3** of the process. Simply leave the setting the way that it is and click **Next**.



The printer setup process is now completed and you can click **Finish**. The software will now open.



You have now completed **Step 2** of the installation process of the Print Optimizer software.

For additional support, please contact support@coldesi.com or open a ticket at <https://support.coldesi.com/open-a-ticket/>.