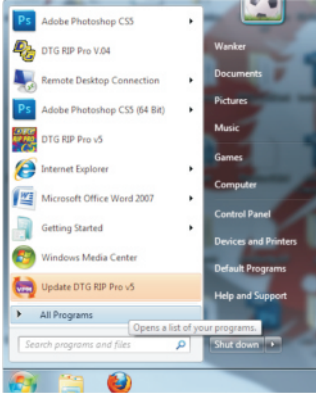


RIP Pro C6

Installing Printer Package



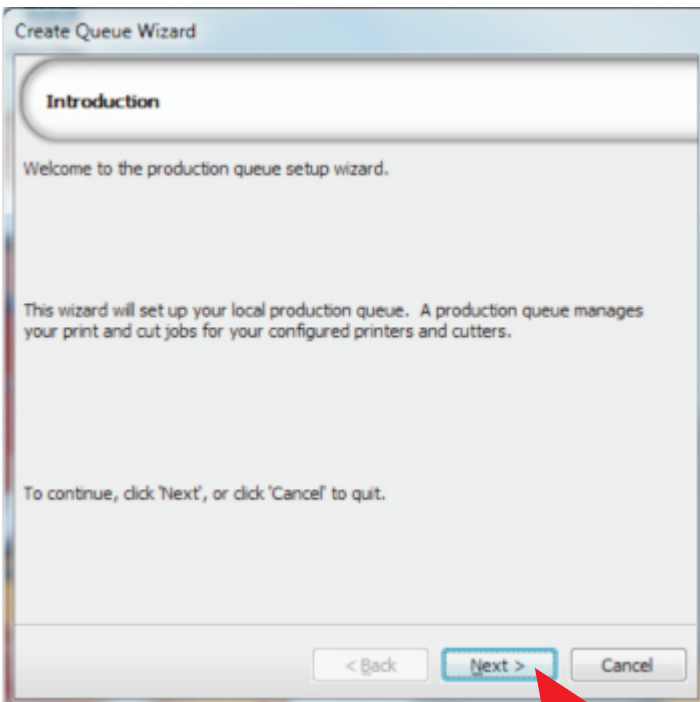
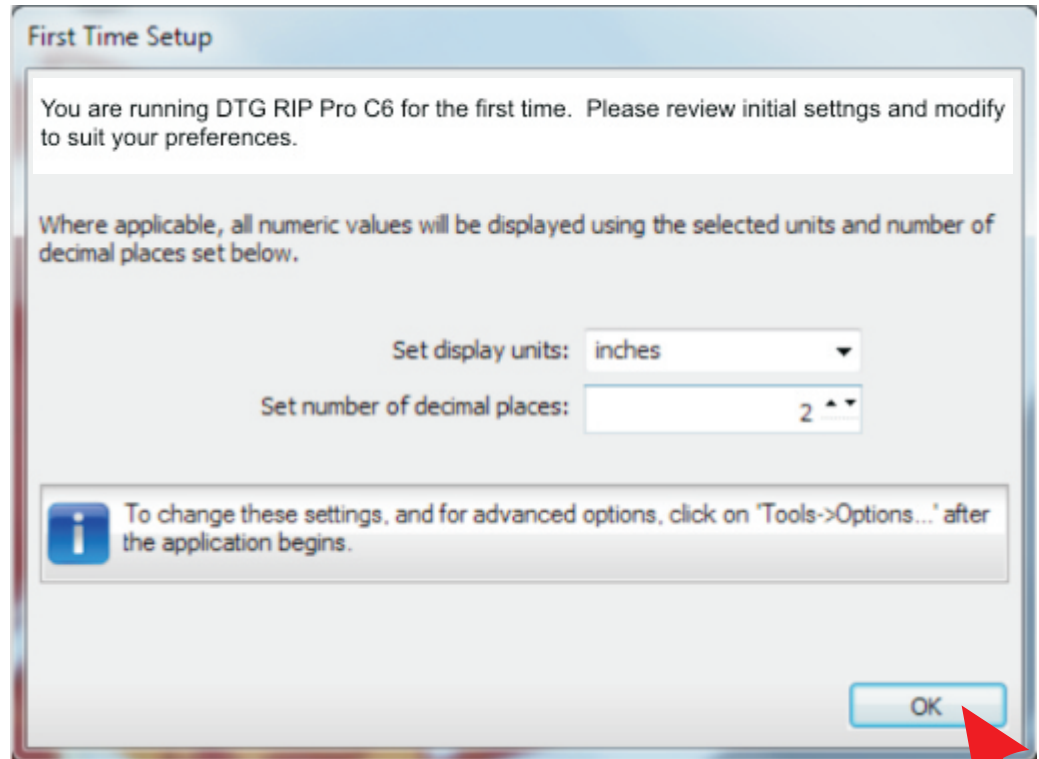
*The following set up is for the First Time launch only.
You do not need to do this each time you launch.*

Go to Windows Start Menu to launch RIP Pro C6.

Choose your preferred measurement system.

Suggest decimal places is 2.

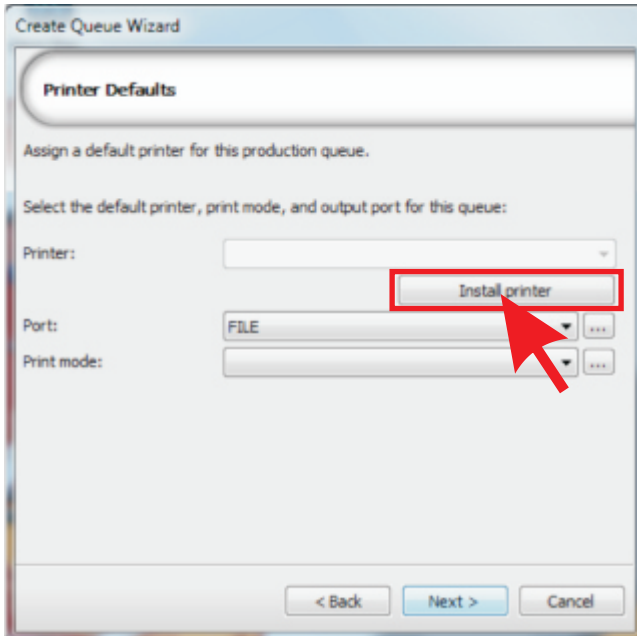
Click OK.



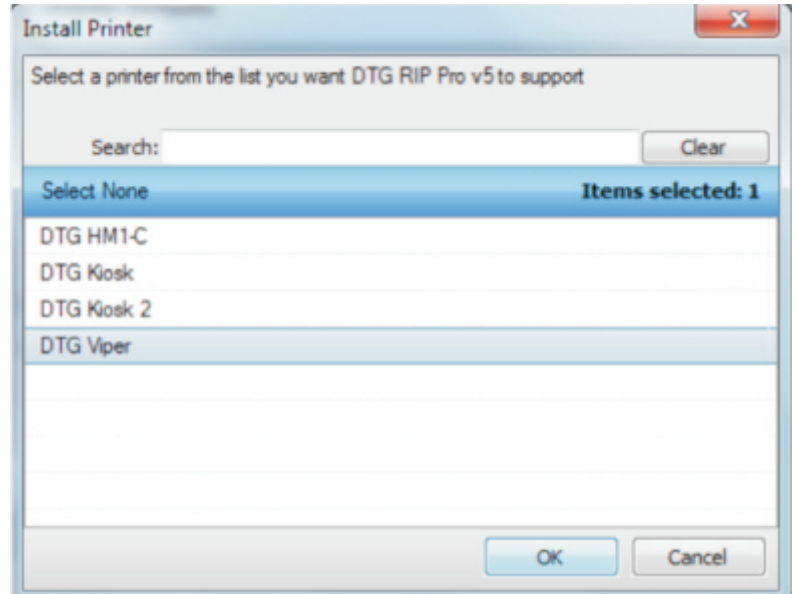
Click NEXT to begin.

RIP Pro C6

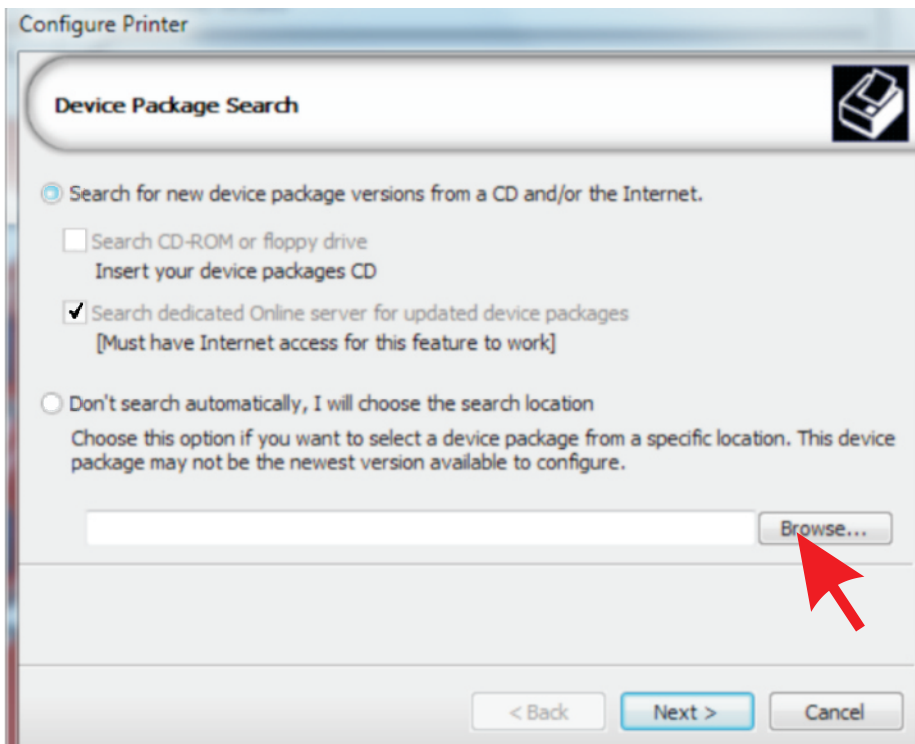
Installing Printer Package



Click INSTALL PRINTER to begin.



Choose your DTG Model from the list. Click OK.



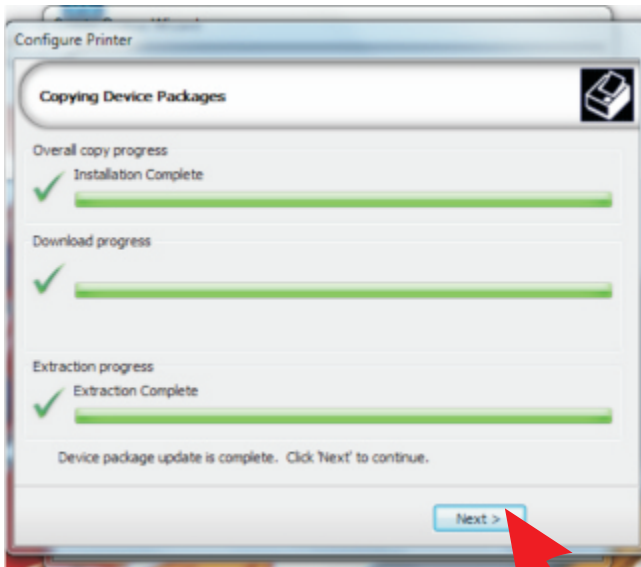
Choose the option: Search for new device package versions from a CD and/or the Internet. Choose Search dedicated Online server for updated device packages.

You must have Internet access on this computer to install the most recent version of the printer package.

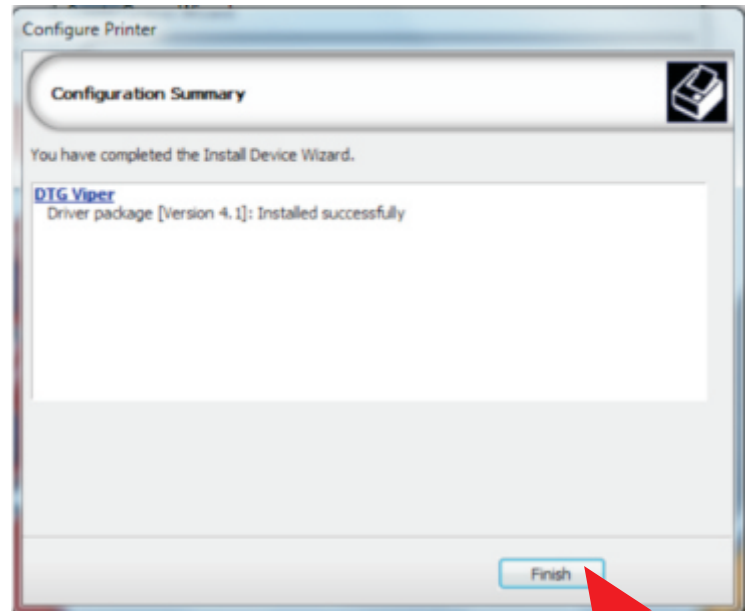
Click NEXT to continue.

RIP Pro C6

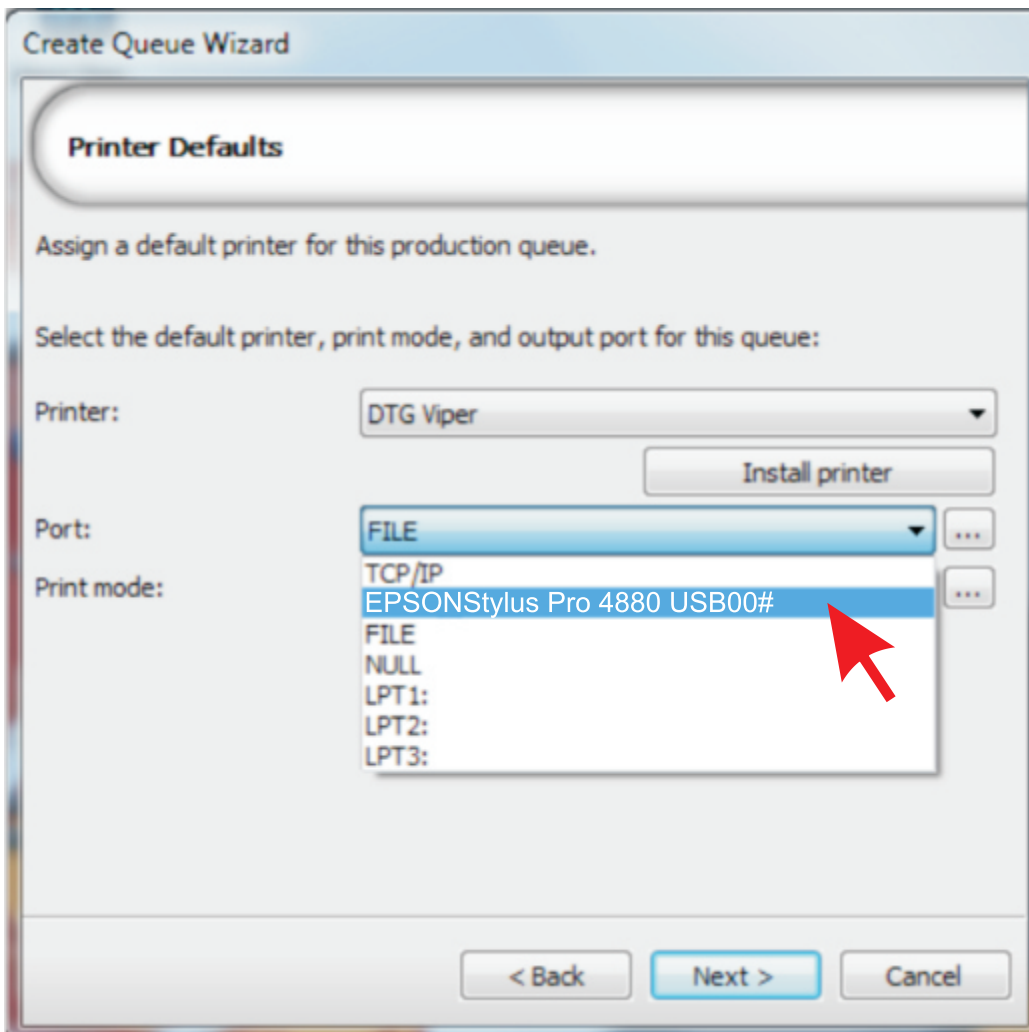
Installing Printer Package



Click NEXT when all 3 progress bars complete.



Click FINISH

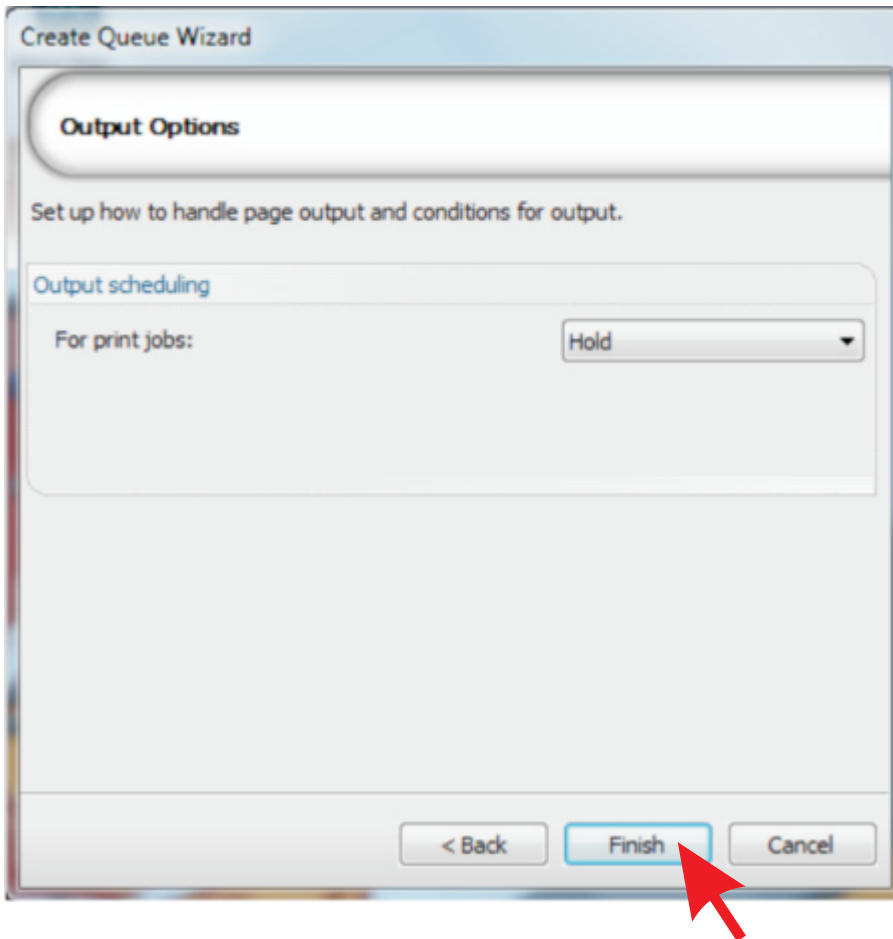


For Port selection choose the USB port that the Epson driver configured on Installation of the Epson driver.

Note: For DTG M series printers you will see Mutho instead of Epson.

RIP Pro C6

Installing Printer Package



Hold is the recommended setting for Output Options.

Click FINISH and RIP Pro C6 will launch.

