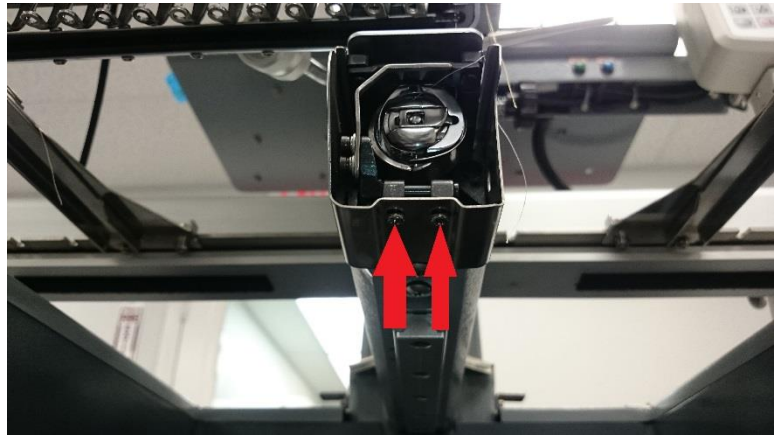
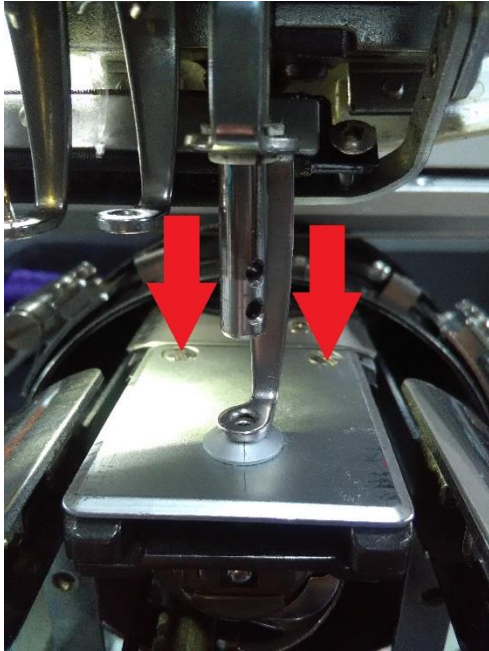
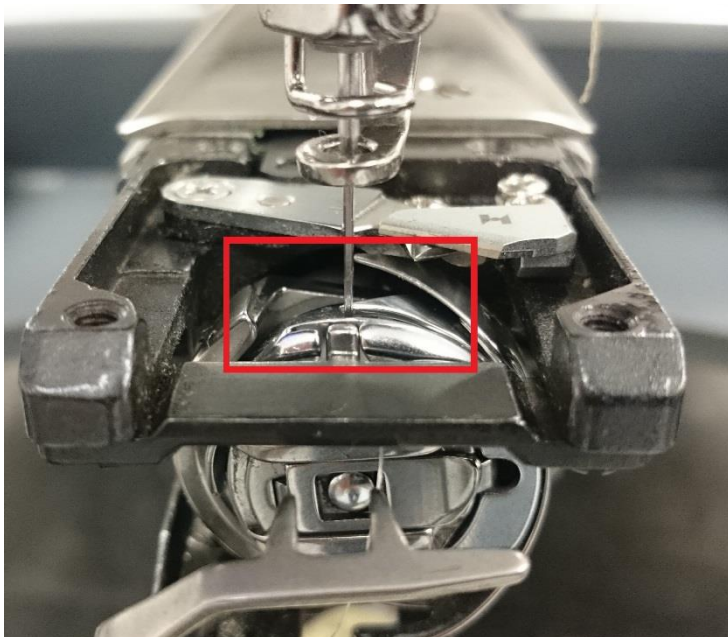


# Checking and Setting the Hook Timing

To check the hook timing you first need to remove the needle plate and hook guard. Their screws are indicated below. With the screws out of the hook guard it slides off to the front.

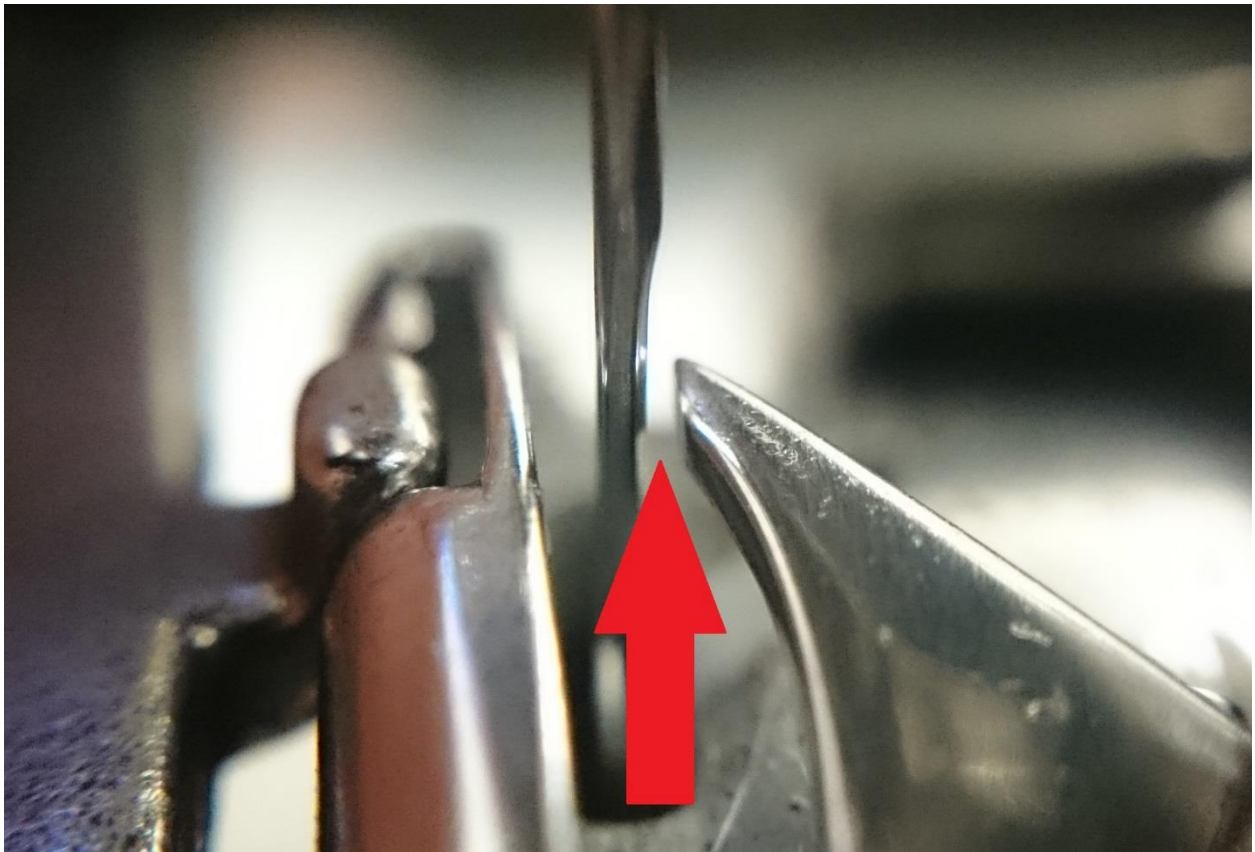
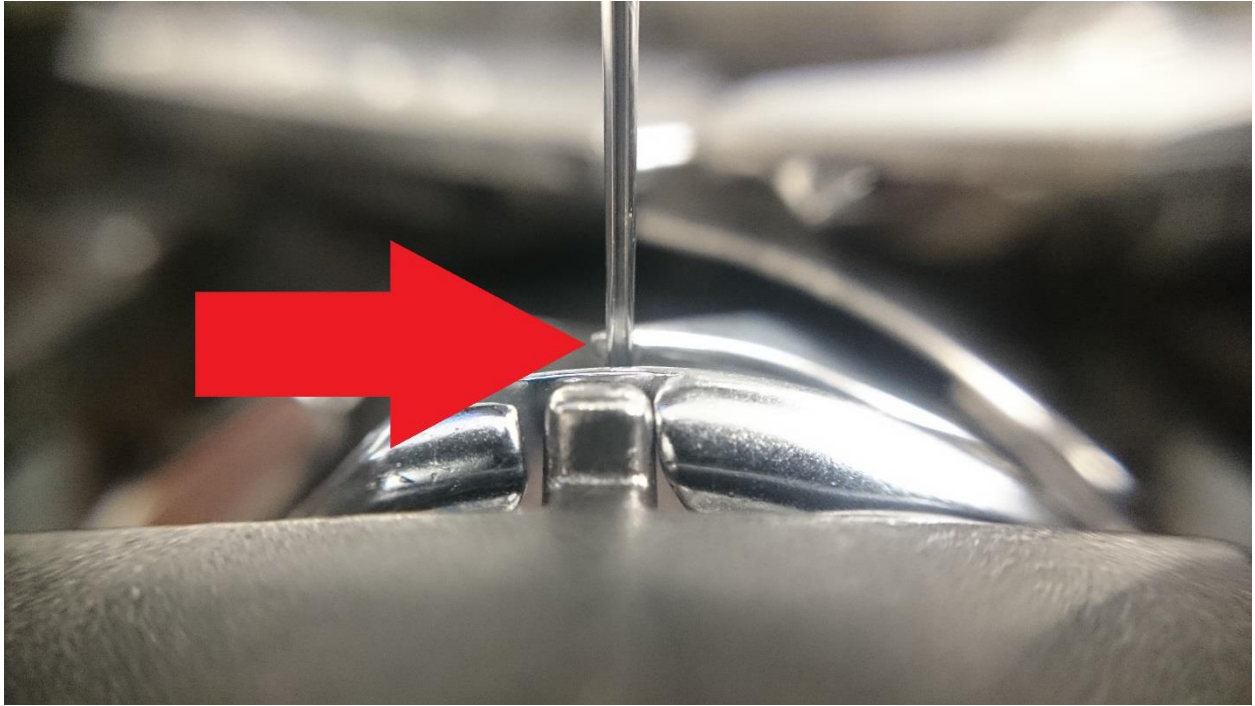


Now you need to rotate the black knob to 195°. If you look at the picture below the area in the red box is where we will be looking.



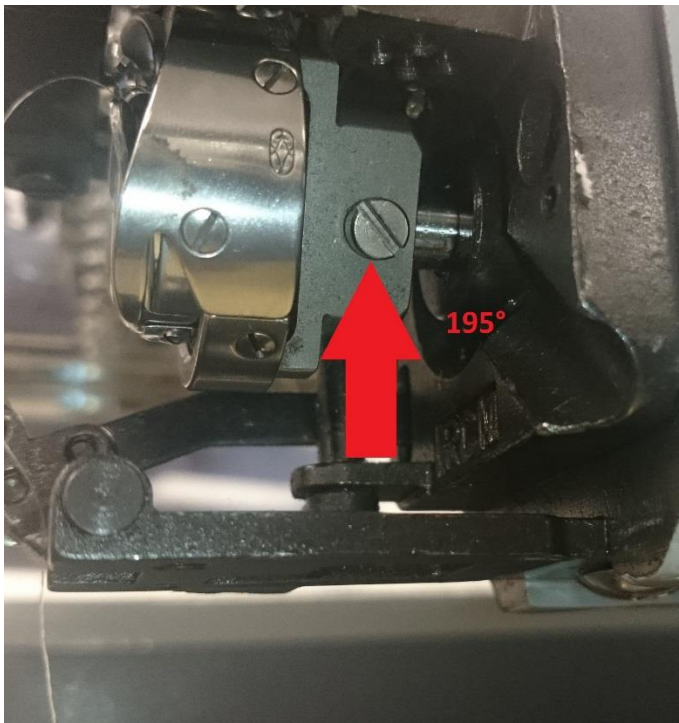
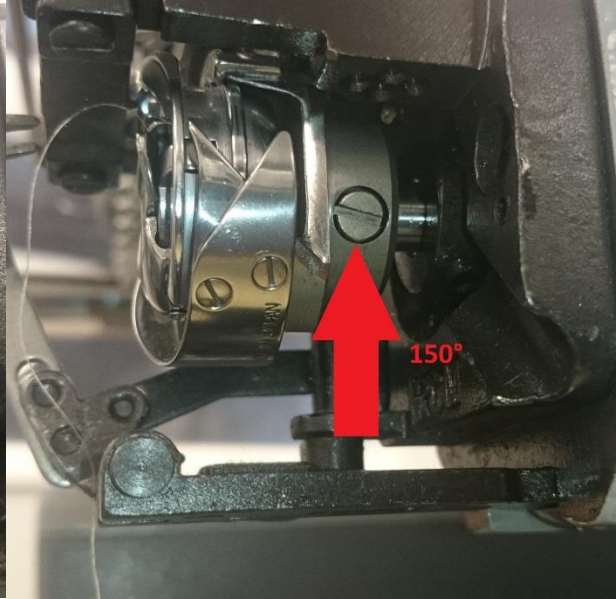
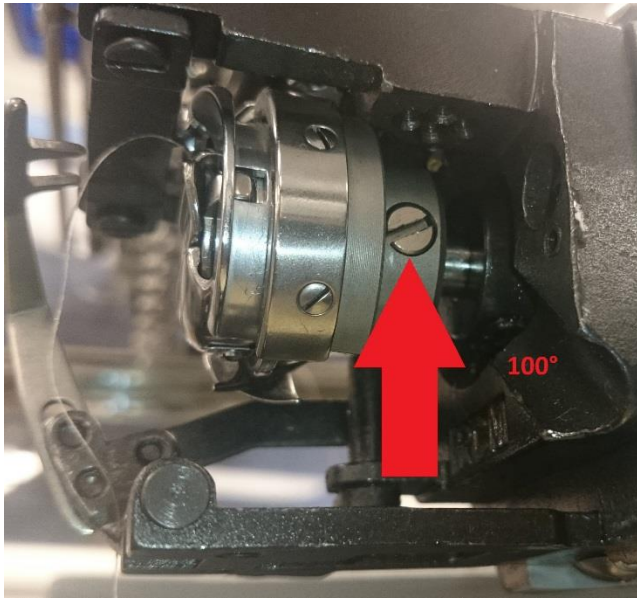
On the next page is what we are looking for. In the first picture you will be looking at the area from the front. Basically a zoomed in picture of what is in the red box. In that picture the arrow is pointing to what we are going to check. The tip of the hook should be just peeking out to the left. Yours might be a little less or more than the one in the picture but that is ok. Next check the hook gap. The bottom picture was taken from the right. And what we are looking for is the area that the arrow is pointing to. It should be gapped like the picture. Now yours might be exactly the same

but it needs to be as close to what is in the picture as you can.



If yours does not look like the pictures you will need to adjust the hook.

To adjust the hook timing you will need to go back to 100°. This will expose the 1<sup>st</sup> screw you will need to loosen. As indicated in the picture below to the left. For the next screw set the machine to 150°. As indicated in the picture below to the right.



Now set the machine to 195°. This will expose the last screw. As indicated in the picture to the Left. Once you loosen this screw the hook should be able to be rotated without changing the degrees. Now what you need to do is make the hook like the pictures in the checking section. Once you get it their lightly tighten the 195° screw. Check your timing point and the hook gap. If it moved on you loosen the screw just a little and adjust then lightly tighten. Once you have it is holding the alignment set the machine to 150° and lightly tighten that screw next set the machine to 100° and lightly tighten that screw. Now we

need to go back to 195° and re-check the alignment. If it is still good tighten the 195°, 150° and 100° screws all the way. **THESE SCREWS NEED TO BE AS TIGHT AS YOU CAN GET THEM.** With the screws tightened down all the way go back to 195° and check the alignment. If it is all good you can now do the stopping finger alignment guide. If you adjusted your hook you will need to adjust the stopping finger.