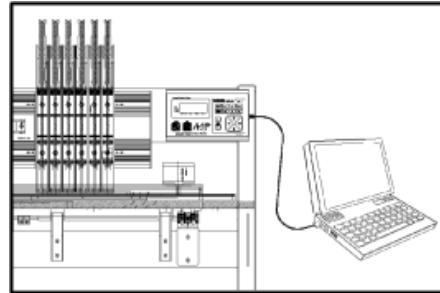


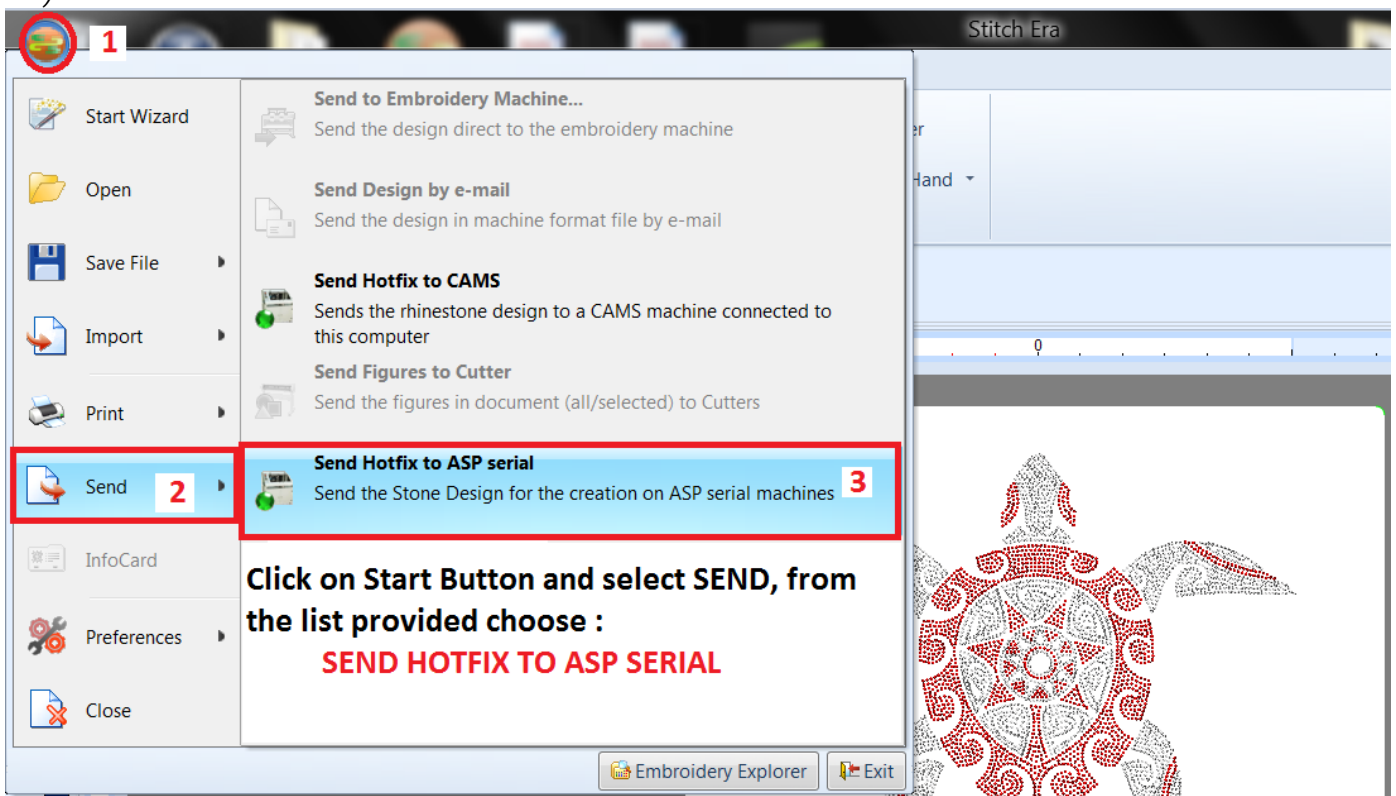
How to send to Pro-Spangle Machine from Sierra Hot Fix ERA:

1) Connect the Computer to the Pro-Spangle Control Panel left side:

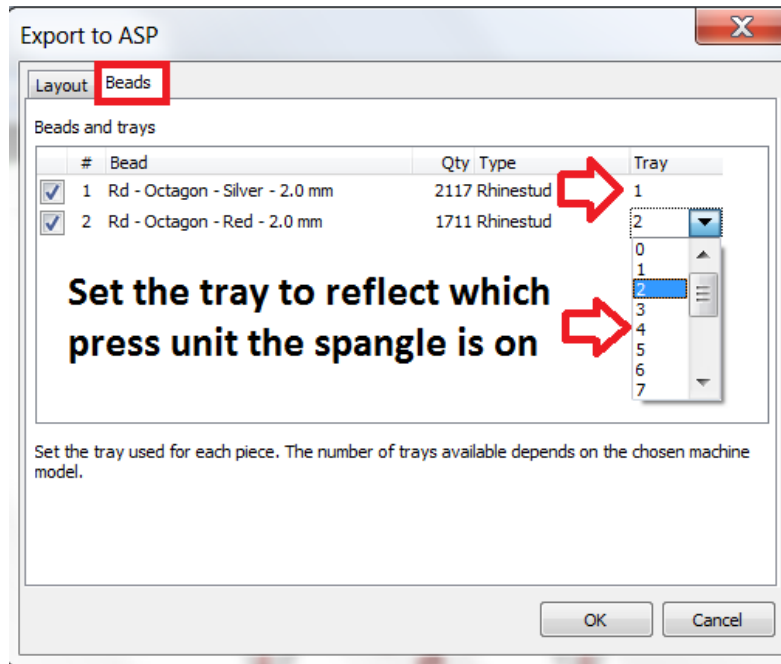


1) From the Sierra HFE Software, click on the **START** Icon and place your mouse cursor over the **SEND** option, Choose “**Send Hotfix to ASP serial**”

2)



- 3) Choose BEADS and assign the spangles sizes and colors to their appropriate Press Unit # in the TRAY Section. Then select OK.

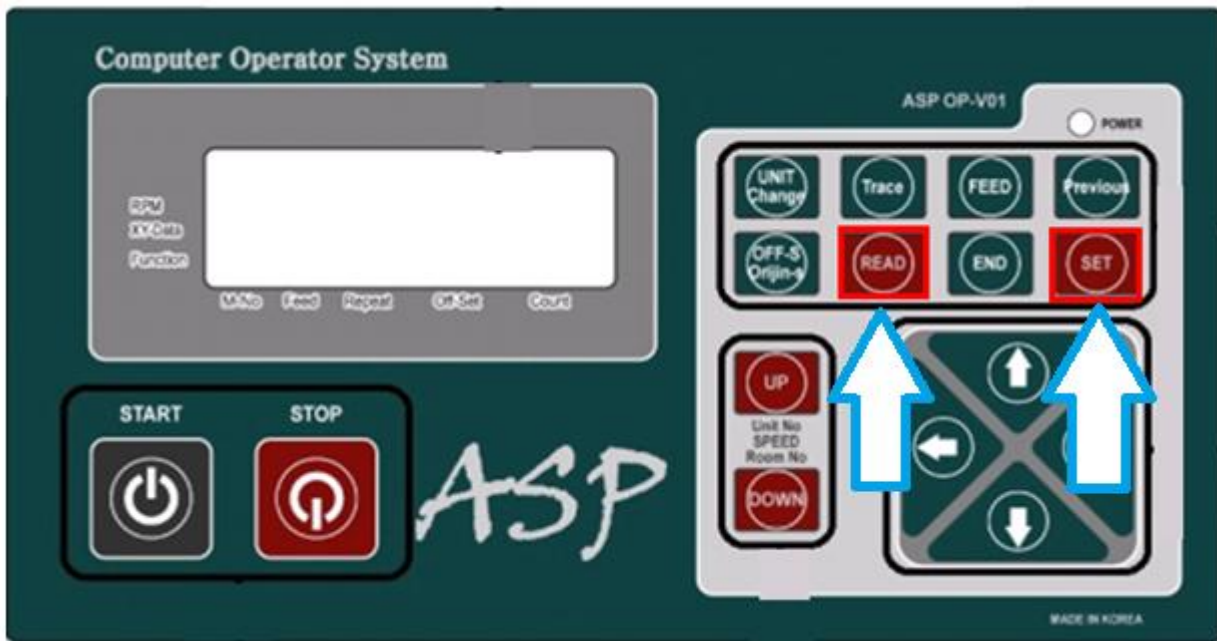


- 4) The COM Port should reflect the correct COM #, and you can name the design in the field provided then click SEND



Choose the COM port and you can name your design in the space provided then select SEND.

- 5) Once you click SEND, On the Pro-Spangle Machine, press the READ Button and then SET 3 times and the design will be sent to the machine.

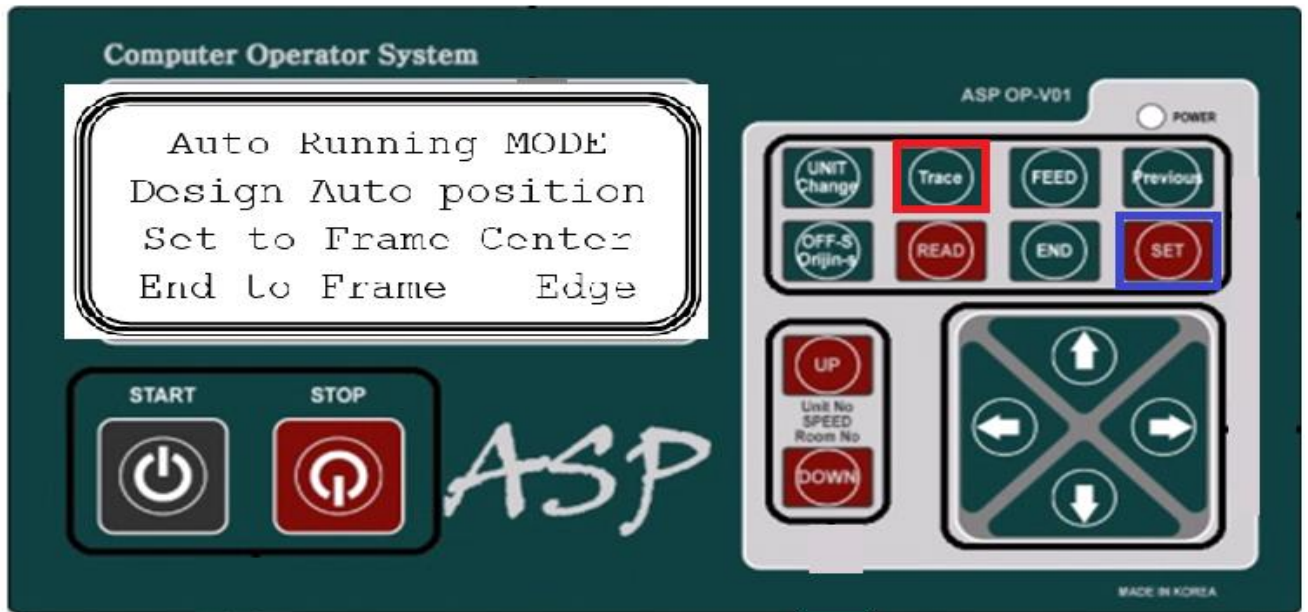


- 2) Once you have chosen the design you wish to run, Place your Spangle Reels onto the machine that you need and pull to waste reels. Now set your Color Changes by Pressing **UNIT CHANGE 2 Times**. Set your color changes using the Speed UP and DOWN buttons to set the correct Press Unit to run, then press SET and set the 2nd color change and so on... Once all color changes are set Press the **PREVIOUS button**.

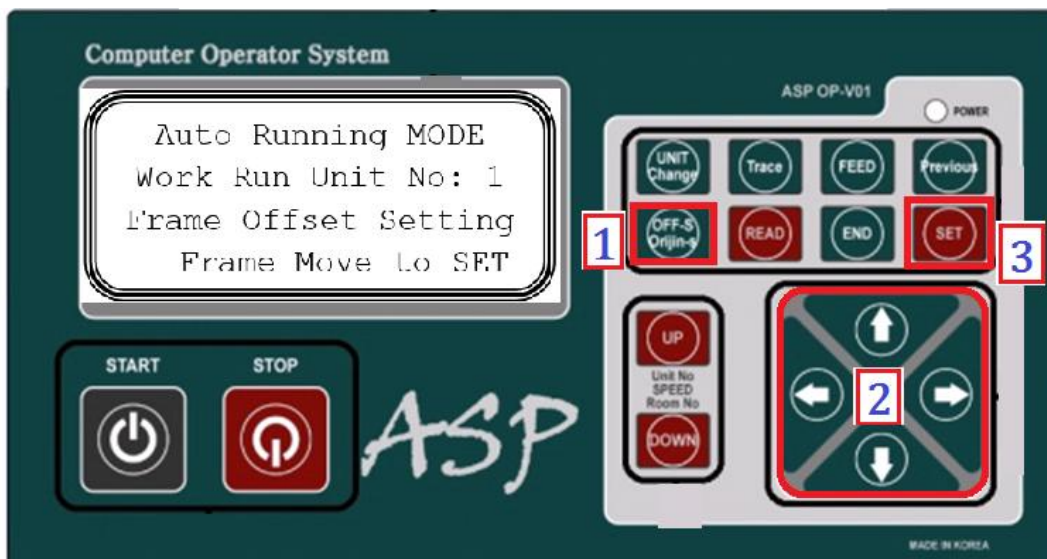
```
Run Color No Setting
UP/Down & Set or END
Design Color No = 1
System Unit No = 99
```

- 3) Move the Table out to place your transfer tape in the center of the table sticky side up. (Be sure to smooth out any bubbles using the back of your finger nails. Then Move the table back towards the center using the ARROW buttons.

- 4) Set Machine to Design Center by pressing the **TRACE button 2 times, Press SET** (The table will move to full range and move to the design center. Then TRACE 1 Time and Press SET and check to ensure Press Unit traces onto the transfer tape, If it traces off in any location Use the ARROW buttons to reposition and trace again to verify.

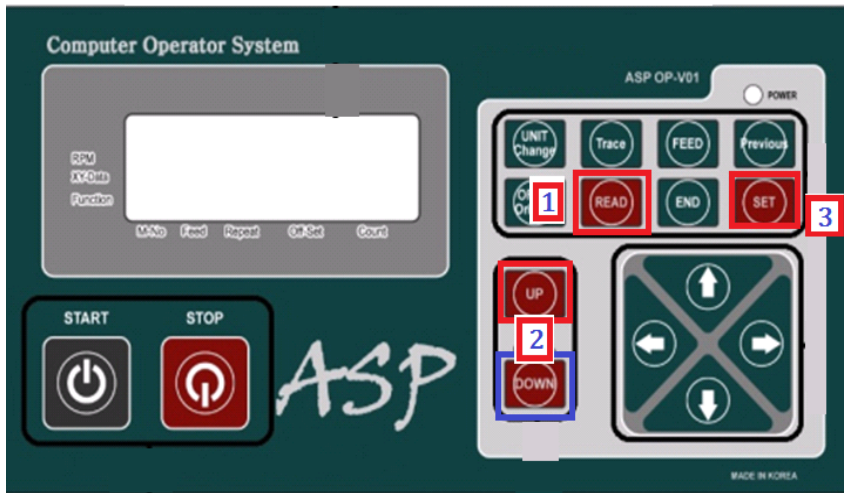


- 5) Set an OFFSET by **pressing the OFF-S Button, Use the Arrow buttons to move the table** to a location that makes it easier to remove finished design and reload a new transfer sheet. (Be sure to not move table too close to Black frame of table). **Press the SET button.**



Deleting Designs from the Machine

- 1) **Press the READ Button**, and then press **the UP button to delete individual designs, Or Press the DOWN button** to delete all the designs from memory, then **Press the SET button** to delete.



Press UP button to delete individual designs

```
-- ASP Main Menu --  
DELETE Room No MODE  
SET to Delete  
Previous to EXIT
```

Press the DOWN button to delete all designs

```
-- ASP Main Menu --  
Room ALL DELETE MODE  
SET to Delete  
Previous to EXIT
```